



d) Changes in such abilities as learning, reasoning, thinking and language are aspects of cognitive development.

- i) physical
- ii) mental
- iii) spiritual
- iv) economical

2. Fill in the blanks with suitable prepositions choosing from the given list.

(4 × ½ = 2 Marks)

(about, at, of, from)

An essay is a piece _____ writing several paragraphs long written _____ one topic. The aim of the essay should be deduced strictly _____ the wording of the title or question, and needs to be defined _____ the beginning.

3. Fill in the blanks with the correct option choosing from the words given in brackets.

(4 × ½ = 2 Marks)

- a) The interview panel _____ (has graded/have graded) the candidates on the basis of their performance in the written tests and in the interviews.
- b) Two members from the Indian team at the science congress in London _____ (is returning/are returning) to India tomorrow.
- c) The bow and arrow _____ (has been used/have been used) by humans since prehistoric times.
- d) Training new recruits _____ (is/are) part of the HR Manager's responsibility.

4. Fill in the blanks in the following passage with appropriate tense forms of the verbs given in brackets.

(4 × ½ = 2 Marks)

A new form of lie detector that _____ (work) by voice analysis and which can be used without a subject's knowledge has been introduced in Britain. Burns International Security Services _____ (exhibit) its PSE at the International Fire and Security Exhibition in London last week. Philip Hicks, assistant manager of Burns' Electron Division, _____ (say) that a private firm _____ (already use) one of these units for pre-employment checks.

5. Fill in the blanks in the given passage with the comparative forms of the adjectives given in brackets.

(4 × ½ = 2 Marks)

- a) Scientists now accept that the Universe is much _____ (big) than it has been conceived in human imagination.
- b) Breathing became _____ (difficult) as we climbed _____ (high).
- c) The guest lecture was definitely _____ (interesting) than the regular class.



6. Define **any two** of the following. **(2×1=2 Marks)**

- a) Microscope
- b) Blueprint
- c) Crane.

7. Match the causes in Column A with the effects in Column B and make sentences using appropriate cause and effect words or phrases. **(4×½=2 Marks)**

A	B
Work pressure and stress	Easy lifestyle
Poor ventilation	Health problems
Technological innovations	Hearing problems
Continuous exposure to loud noise	Indoor pollution

8. Rewrite the following sentences in the reported speech. **(2×1=2 Marks)**

- a) When my bike broke down, my friend said, “Let us take the bus to go to college.”
- b) “Four students have been selected to go to the Nippon University for the student exchange program”, said the Principal in his annual report.

9. Replace the underlined words or phrases with a suitable adverb. An example is done for you. **(4×½=2 Marks)**

Eg. : He knocked at the door with violence. Ans. : He knocked at the door violently.

- a) The speaker spoke about the problem in brief.
- b) She looked at the teacher in silence.
- c) They waited with patience in the Minister’s office for four hours.
- d) The spectators cheered their team with excitement.

10. Rewrite the following suggestions as instructions. **(2×1=2 Marks)**

- a) Awareness programmes can be organized to reduce unhygienic sanitation practices.
- b) Plastic bags can be substituted with paper bags to reduce environmental pollution.



PART – B

(5×16=80 Marks)

11. Read the passage and answer the questions given below : (16)

A recent investigation by scientists at the U.S. Geological Survey shows that strange animal behavior might help predict earthquakes. Investigators found such occurrences within a ten – kilometer radius of the epicenter of a fairly recent quake. Some birds screeched and flew about wildly; dogs yelled and ran around uncontrollably. Scientists believe that animals can perceive environmental changes several hours or even days before the mishap. Animals were noted as being restless for several weeks before a Tashkent, Uzbekistan, Earthquake. An hour before the disaster domestic animals refused to go indoors, and dogs howled and barked furiously. In 1960, an earthquake struck Agadir in Morocco. Survivors recall that stray animals, including dogs were streaming out of town before the earthquake. In a safari zoo near San Fransisco, Llamas would not eat the evening before a 1979 quake, and they ran around wildly all night. Unusual animal behavior preceding earthquakes has been noted for centuries.

British Admiral Robert Fitzroy reported huge flocks of screaming sea birds over Concepcion Chile, in 1835. An hour and a half later, dogs were seen fleeing, and ten minutes later the town was destroyed. Similar stories of chickens running around in apparent states of panic, horses trembling and dogs barking incessantly were recorded throughout the eighteenth and nineteenth century by survivors of earthquake destruction in India, Yugoslavia, Peru, Mexico and the United States. In 1976, after monitoring bizarre animal behavior, the Chinese predicted a devastating earthquake. Although hundreds of thousands of people were killed, the government was able to evacuate millions of other people and thus keep the death toll at a lower level.

- A) Choose the response which best reflects the meaning of the text. (4×1=4 Marks)

I) What prediction may be made by observing animal behaviour ?

- i) An impending earthquake
- ii) The number of people who will die
- iii) The ten-kilometer radius from epicenter
- iv) An earthquake has occurred

II) The author implies that animals are aware of an impending earthquake because

- i) of their superior intelligence
- ii) they have certain instinctive abilities that humans do not possess
- iii) they are generally closer to the epicenter than the human observers
- iv) they react to other animal behaviour




- III) The passage implies that if scientists can accurately predict earthquakes, there will be
- i) fewer animals going crazy
 - ii) a lower death rate
 - iii) fewer people evacuated
 - iv) fewer environmental changes
- IV) The main idea of this passage is that
- i) earthquakes can be predicted by observing animal behaviour
 - ii) scientists can interpret animal behaviour
 - iii) observing animal behaviour can help people prepare for earthquakes
 - iv) people have to train animals to warn of impending earthquakes
- B) State whether the following statements are true or false. **(6×1=6 Marks)**
- i) Some animals may be able to sense an approaching earthquake.
 - ii) Dogs were seen swimming in a stream before an earthquake.
 - iii) Only dogs and horses are capable of sensing earthquakes.
 - iv) By observing animal behaviour scientists perhaps can predict earthquakes.
 - v) Animals showing bizarre behaviour has been observed only recently.
 - vi) The Chinese have always predicted earthquakes after observing animal behaviour.
- C) Give the meaning of the following words choosing from the given options. **(6×1=6 Marks)**
- i) EVACUATE
 - a) remove
 - b) exile
 - c) emaciate
 - d) destroy
 - ii) EPICENTRE
 - a) stratosphere
 - b) periphery
 - c) contour
 - d) core
 - iii) DEVASTATING
 - a) destructive
 - b) voracious
 - c) intense
 - d) forthcoming
 - iv) PERCEIVE
 - a) sharpen
 - b) sense
 - c) piercing
 - d) obtain
 - v) INCESSANTLY
 - a) insistently
 - b) continuously
 - c) intermittently
 - d) considerably
 - vi) PREDICT
 - a) foretell
 - b) react
 - c) behave
 - d) dictate



12. a) Your younger brother/sister is going on an industrial visit with his/her class. Write a set of eight instructions to be followed during the trip. **(16)**
 (OR)
 b) Instances of chain snatching and mobile snatching have increased nowadays. Write a set of eight recommendations to fight these problems. **(16)**
13. a) Interpret the following table in about **300** words. Also state your inferences from the table and list your recommendations to bring about an improvement in the situation. **(16)**

TIGERS COME ROARING BACK

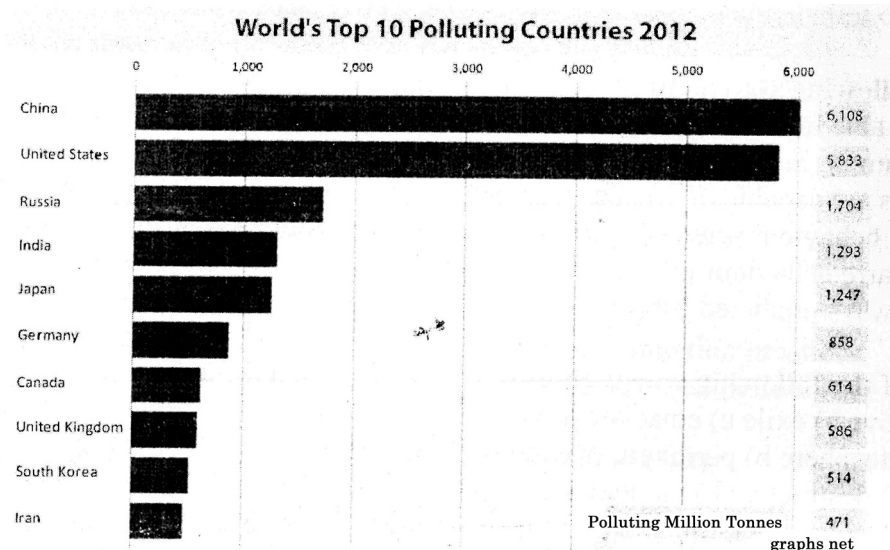
INDIA'S TIGER POPULATION INCREASED AT THE AVERAGE RATE OF 6% PER ANNUM FROM 2006; LARGEST RISE RECORDED IN WESTERN GHATS



Year	Tamil Nadu	Kerala	Karnataka	All India
2006	76	46	290	1,411
2010	163	71	300	1,706
2014	229	136	406	2,226

(OR)

- b) Interpret the following chart in about **300** words. Also state your inferences from the chart and list your recommendations to bring about an improvement in the situation. **(16)**





14. a) You were chosen to represent your college in a National Technological Design Competition in Delhi. Write a letter to your uncle who does not know how to access email etc. but who is very much interested in your welfare, about your experience of travelling to Delhi with your team, your stay there, your participation and performance in the event, etc. **(16)**

(OR)

b) You recently bought a new smartphone with the latest features. Compose an email to your friend who has asked you for your suggestion for buying a new mobile discussing both the positives and negatives of the new mobile. **(16)**

15. Write an essay in about **300** words on **one** of the following topics. **(16)**

a) Should students be involved in politics ?

(OR)

b) Can India really become a superpower in the next 25 years ?
